

# Table of Contents

Page	View	Box Type	Sill Type
2	Vertical Section	Medium Box	Draughtstrip
3	Vertical Section	Medium Box	Draughtstrip x 2
4	Vertical Section	Medium Box	VS Sill
5	Vertical Section	Medium Box	VS HP Sill
6	Vertical Section	Medium Box	None
7	Vertical Section	Medium Box	Flapseal
8	Horizontal Section	Medium Box	-
9	Vertical Section	Large Box	Draughtstrip
10	Vertical Section	Large Box	Draughtstrip x 2
11	Vertical Section	Large Box	VS Sill
12	Vertical Section	Large Box	VS HP Sill
13	Vertical Section	Large Box	None
14	Vertical Section	Large Box	Flapseal
15	Horizontal Section	Large Box	-
16	Vertical Section	Extra Large Box	Draughtstrip
17	Vertical Section	Extra Large Box	Draughtstrip x 2
18	Vertical Section	Extra Large Box	VS Sill
19	Vertical Section	Extra Large Box	VS HP Sill
20	Vertical Section	Extra Large Box	None
21	Vertical Section	Extra Large Box	Flapseal
22	Horizontal Section	Extra Large Box	-

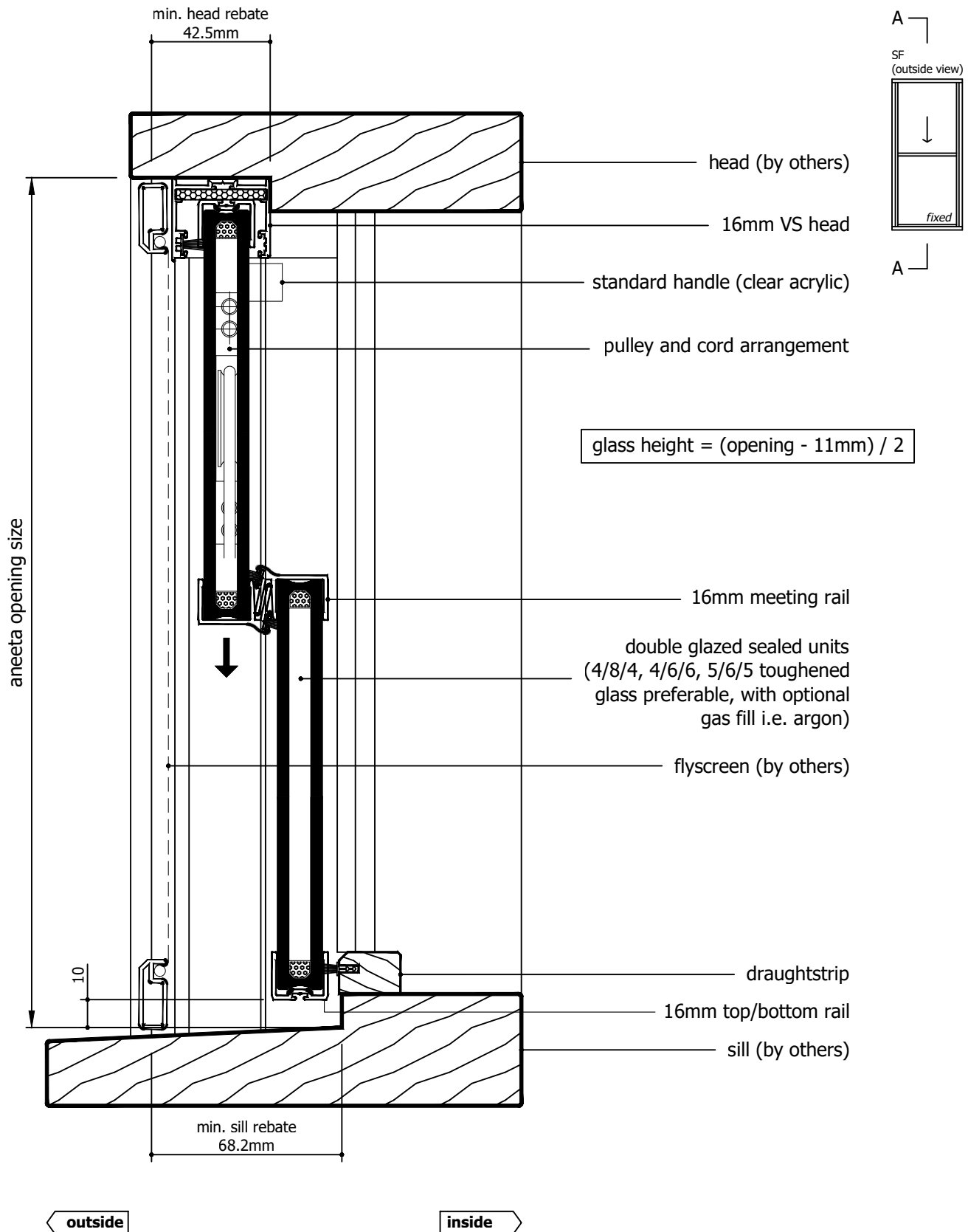
Rev	Description	Approved By	Date
G	16mm flapseal option updated to QEZ48	DF	03/2/2026
F	Delete P008 and replace with P229 - VS Sill	DF	27/8/2025
E	VS 300Pa/800Pa sill adaptor changed to VS Sill/VS HP Sill	DF	Oct2024
D	Add various sill options	SE	Jun2024
C	New lock, sill, pulley location, box sections, layout	RL	Jun2013
B	Adjusted glass sizes	UF	Nov2010
A	Original Issue	UF	Jan2010

<p>Proprietary and confidential</p> <p>The information contained in this drawing is the sole property of Aneeta Australia. Any reproduction in part or as a whole, without the written permission of Aneeta Australia is prohibited.</p>	<p><b>Title:</b> 2 pane servery 16mm double glazed INTERLOCKING sashless vertical slider in timber frames (bottom pane fixed) SF</p>				<p><b>Material:</b> in Timber Frame</p>	
	<p><b>aneeta</b> 949 Stud Road, Rowville VIC 3178, ABN 80 062 883 729</p>				<p><b>Finish:</b></p>	
	<p><b>Drwn:</b> UF <b>Chk:</b> - <b>Date:</b> Jan 2010 <b>Scale:</b></p>				<p><b>Die/Part:</b></p>	
	<p><b>Sheet 1 of 22</b> <b>Revision:</b> G</p>				<p><b>Dwg No:</b> VS 2P16 SF T</p>	




IF IN DOUBT ASK - DO NOT SCALE DRAWING

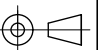
M:\Documentation\Website Downloads\3. Timber Frames\1. Vertical\2. Servery\VS 2P16 SF T (G) - 2 pane servery 16mm double glazed INTERLOCKING sashless vertical slider in timber frames (bottom pane fixed) SF.dwg



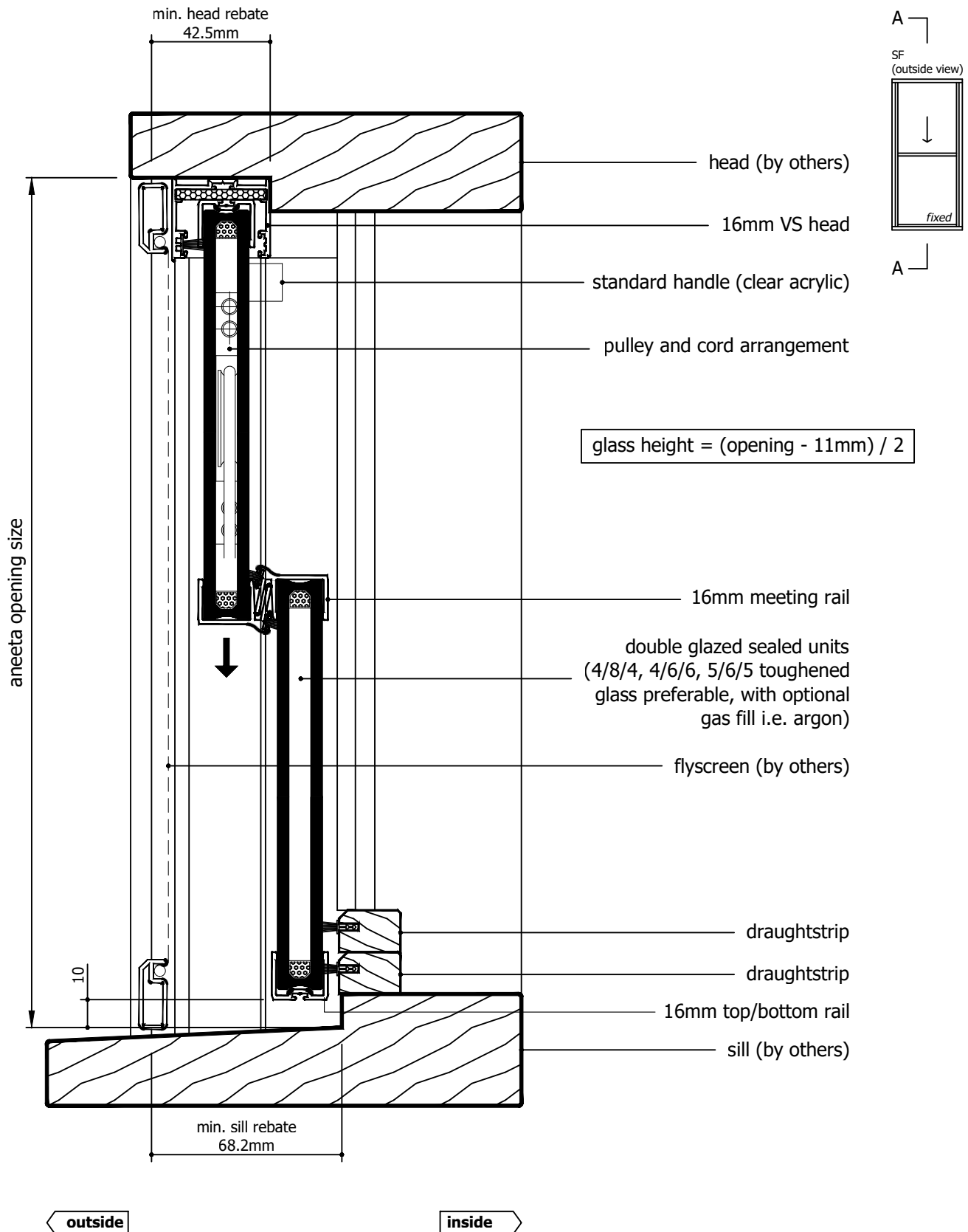
Rev	Description	Approved By	Date
G	16mm flapseal option updated to QEZ48	DF	03/2/2026
F	Delete P008 and replace with P229 - VS Sill	DF	27/8/2025
E	VS 300Pa/800Pa sill adaptor changed to VS Sill/VS HP Sill	DF	Oct2024
D	Add various sill options	SE	Jun2024
C	New lock, sill, pulley location, box sections, layout	RL	Jun2013
B	Adjusted glass sizes	UF	Nov2010
A	Original Issue	UF	Jan2010

<div>Proprietary and confidential</div> <div>The information contained in this drawing is the sole property of Aneeta Australia. Any reproduction in part or as a whole, without the written permission of Aneeta Australia is prohibited.</div>	<div>Title: 2 pane servery 16mm double glazed INTERLOCKING sashless vertical slider in timber frames (bottom pane fixed) SF with medium box and draughtstrip at sill vertical section A-A</div>				<div> 949 Stud Road, Rowville VIC 3178, ABN 80 062 883 729</div>		<div>Material: in Timber Frame</div>		
							<div>Finish:</div>		
							<div>Die/Part:</div>		
	<div>Drwn: UF   Chk: -   Date: Jan 2010   Scale: 1:20 A4</div>						<div>Dwg No: VS 2P16 SF T</div>		
<div>Sheet 2 of 22</div>						<div>Revision: G</div>			

M:\Documentation\Website Downloads\3. Timber Frames\1. Vertical\2. Servery\VS 2P16 SF T (G) - 2 pane servery 16mm double glazed INTERLOCKING sashless vertical slider in timber frames (bottom pane fixed) SF.dwg




IF IN DOUBT ASK - DO NOT SCALE DRAWING



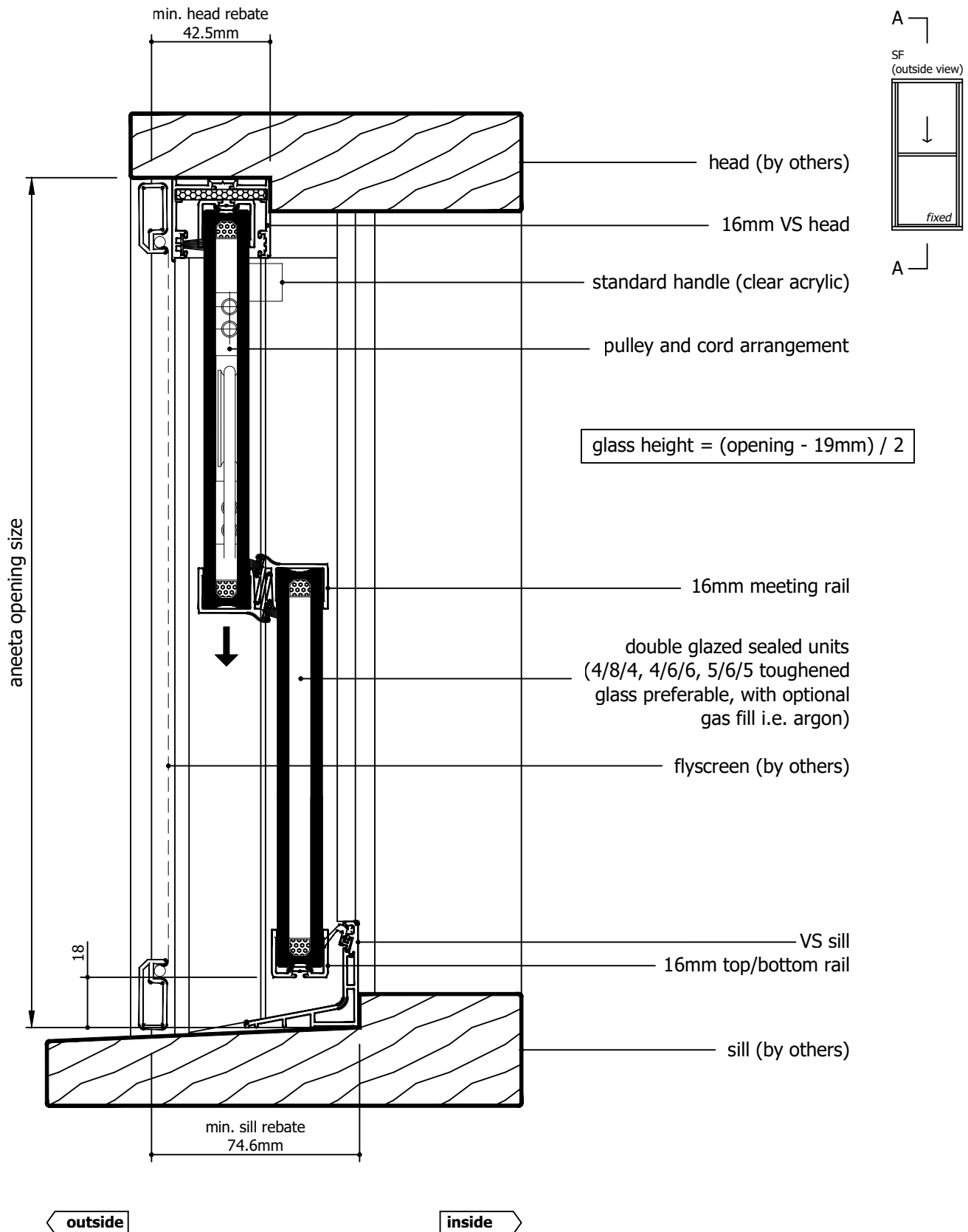
M:\Documentation\Website Downloads\3. Timber Frames\1. Vertical\2. Servery\VS 2P16 SF T (G) - 2 pane servery 16mm double glazed INTERLOCKING sashless vertical slider in timber frames (bottom pane fixed) SF.dwg

Rev	Description	Approved By	Date
G	16mm flapseal option updated to QEZ48	DF	03/2/2026
F	Delete P008 and replace with P229 - VS Sill	DF	27/8/2025
E	VS 300Pa/800Pa sill adaptor changed to VS Sill/VS HP Sill	DF	Oct2024
D	Add various sill options	SE	Jun2024
C	New lock, sill, pulley location, box sections, layout	RL	Jun2013
B	Adjusted glass sizes	UF	Nov2010
A	Original Issue	UF	Jan2010


<div>Proprietary and confidential</div> <div>The information contained in this drawing is the sole property of Aneeta Australia. Any reproduction in part or as a whole, without the written permission of Aneeta Australia is prohibited.</div>	<div>Title: 2 pane servery 16mm double glazed INTERLOCKING sashless vertical slider in timber frames (bottom pane fixed) SF with medium box and 2 x draughtstrip at sill vertical section A-A</div>				<div> 949 Stud Road, Rowville VIC 3178, ABN 80 062 883 729</div>		<div>Material: in Timber Frame</div>	
							<div>Finish:</div>	
							<div>Die/Part:</div>	
							<div>Dwg No: VS 2P16 SF T</div>	
Drwn: UF		Chk: -	Date: Jan 2010	Scale: 1:20 A4	Sheet 3 of 22		Revision: G	



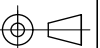
IF IN DOUBT ASK - DO NOT SCALE DRAWING

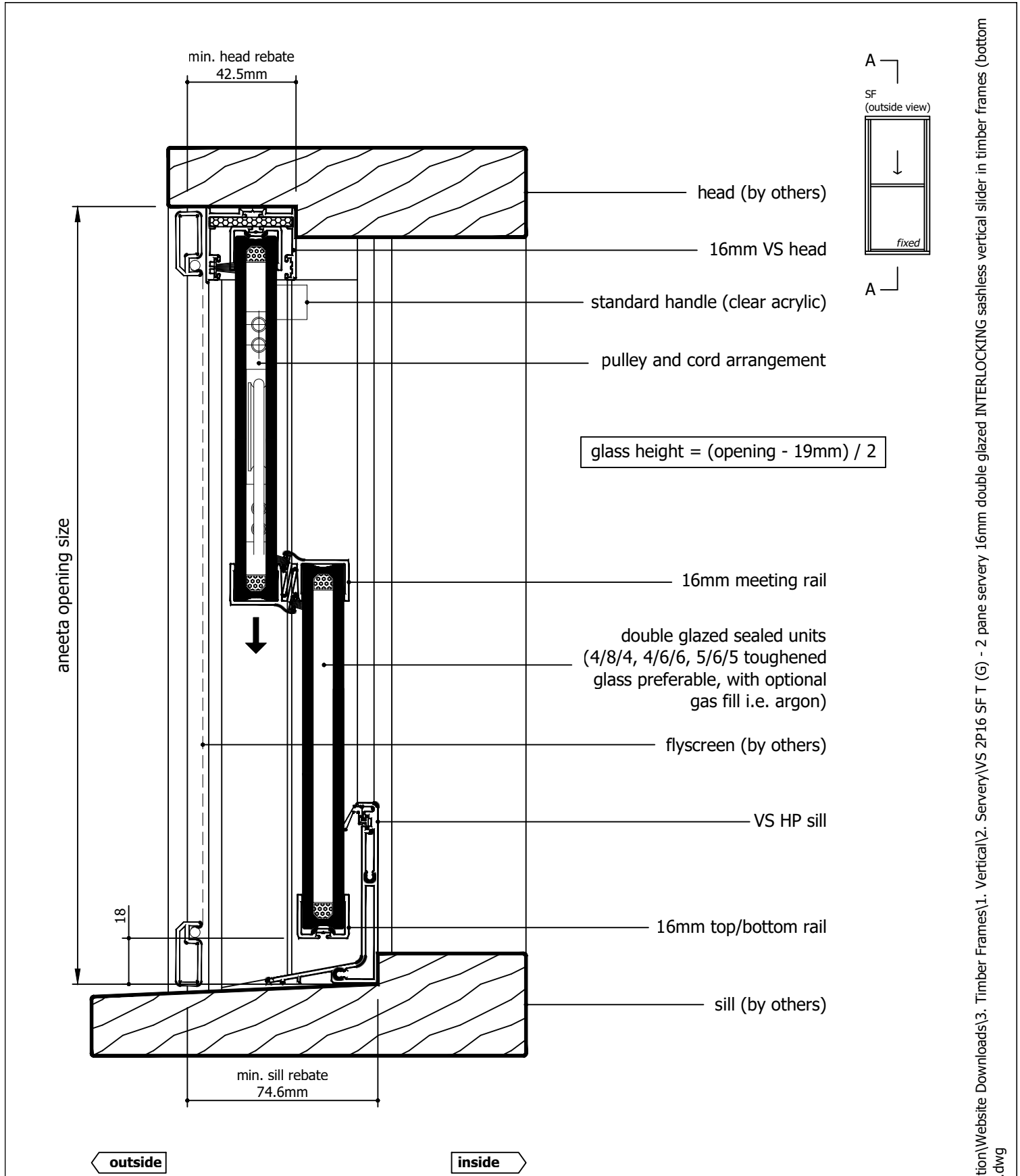


Rev	Description	Approved By	Date
G	16mm flapseal option updated to QEZ48	DF	03/2/2026
F	Delete P008 and replace with P229 - VS Sill	DF	27/8/2025
E	VS 300Pa/800Pa sill adaptor changed to VS Sill/VS HP Sill	DF	Oct2024
D	Add various sill options	SE	Jun2024
C	New lock, sill, pulley location, box sections, layout	RL	Jun2013
B	Adjusted glass sizes	UF	Nov2010
A	Original Issue	UF	Jan2010


<p>Proprietary and confidential</p> <p>The information contained in this drawing is the sole property of Aneeta Australia. Any reproduction in part or as a whole, without the written permission of Aneeta Australia is prohibited.</p>	<p>Title: 2 pane servery 16mm double glazed INTERLOCKING sashless vertical slider in timber frames (bottom pane fixed) SF with medium box and VS sill vertical section A-A</p>				 <p>949 Stud Road, Rowville VIC 3178, ABN 80 062 883 729</p>	<p>Material: in Timber Frame</p>	
			<p>Finish:</p>				
			<p>Die/Part:</p>				
			<p>Dwg No: VS 2P16 SF T</p>				
Drwn: UF	Chk: -	Date: Jan 2010	Scale: 1:20 A4	Sheet 4 of 22	Revision: G		

M:\Documentation\Website Downloads\3. Timber Frames\1. Vertical\2. Servery\VS 2P16 SF T (G) - 2 pane servery 16mm double glazed INTERLOCKING sashless vertical slider in timber frames (bottom pane fixed) SF.dwg

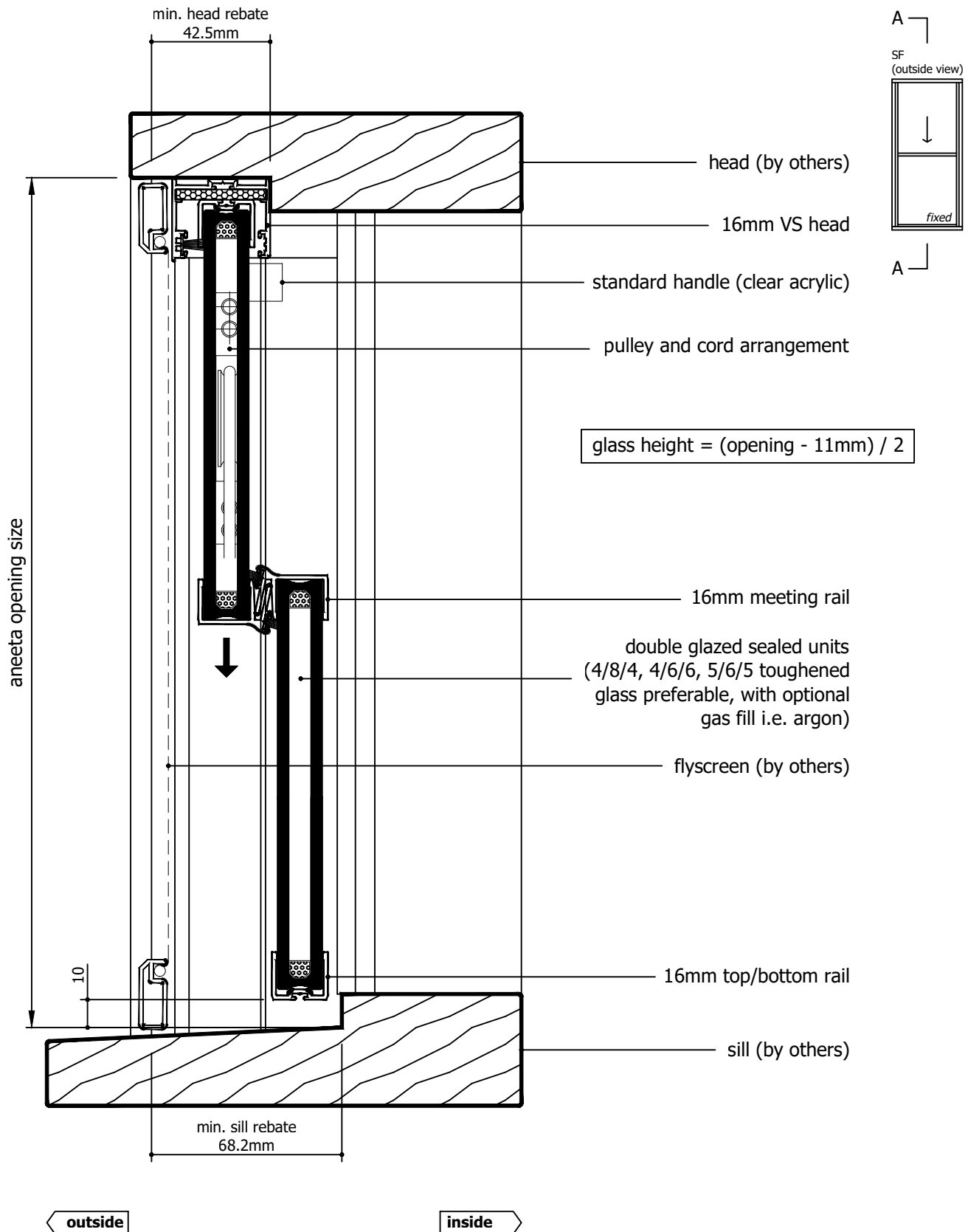





Rev	Description	Approved By	Date
G	16mm flapseal option updated to QEZ48	DF	03/2/2026
F	Delete P008 and replace with P229 - VS Sill	DF	27/8/2025
E	VS 300Pa/800Pa sill adaptor changed to VS Sill/VS HP Sill	DF	Oct2024
D	Add various sill options	SE	Jun2024
C	New lock, sill, pulley location, box sections, layout	RL	Jun2013
B	Adjusted glass sizes	UF	Nov2010
A	Original Issue	UF	Jan2010

<p>Proprietary and confidential</p> <p>The information contained in this drawing is the sole property of Aneeta Australia. Any reproduction in part or as a whole, without the written permission of Aneeta Australia is prohibited.</p>	Title: 2 pane servery 16mm double glazed INTERLOCKING sashless vertical slider in timber frames (bottom pane fixed) SF with medium box and VS HP sill vertical section A-A				 949 Stud Road, Rowville VIC 3178, ABN 80 062 883 729	Material: in Timber Frame
						Finish:
						Die/Part:
						Dwg No: VS 2P16 SF T
	Drwn: UF	Chk: -	Date: Jan 2010	Scale: 1:20 A4		Sheet 5 of 22

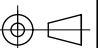
M:\Documentation\Website Downloads\3. Timber Frames\1. Vertical\2. Servery\VS 2P16 SF T (G) - 2 pane servery 16mm double glazed INTERLOCKING sashless vertical slider in timber frames (bottom pane fixed) SF.dwg



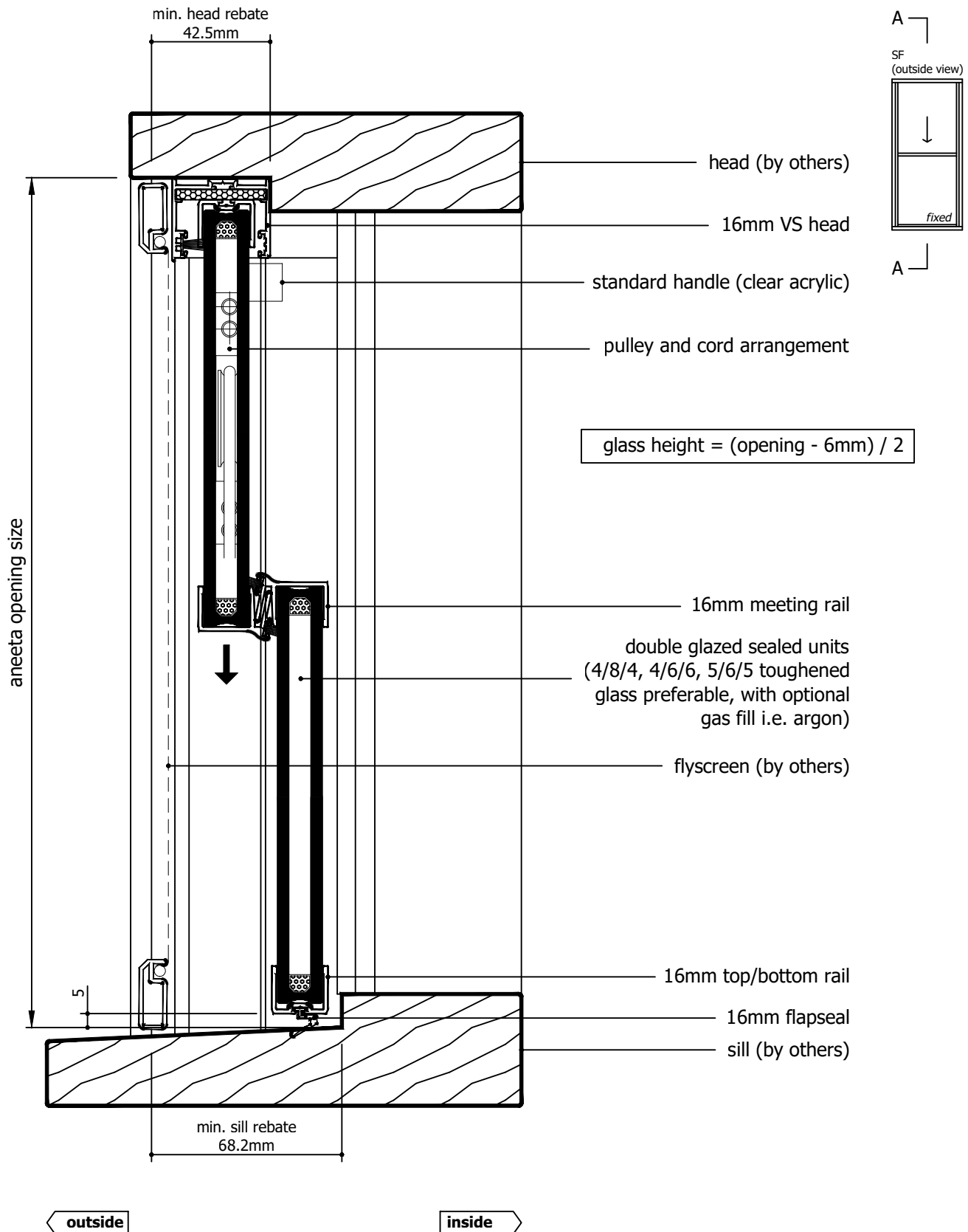
Rev	Description	Approved By	Date
G	16mm flapseal option updated to QEZ48	DF	03/2/2026
F	Delete P008 and replace with P229 - VS Sill	DF	27/8/2025
E	VS 300Pa/800Pa sill adaptor changed to VS Sill/VS HP Sill	DF	Oct2024
D	Add various sill options	SE	Jun2024
C	New lock, sill, pulley location, box sections, layout	RL	Jun2013
B	Adjusted glass sizes	UF	Nov2010
A	Original Issue	UF	Jan2010

Proprietary and confidential  The information contained in this drawing is the sole property of Aneeta Australia. Any reproduction in part or as a whole, without the written permission of Aneeta Australia is prohibited.	<b>Title:</b> 2 pane servery 16mm double glazed INTERLOCKING sashless vertical slider in timber frames (bottom pane fixed) SF with medium box and no sill adaptor vertical section A-A				<b>Material:</b> in Timber Frame	
	 949 Stud Road, Rowville VIC 3178, ABN 80 062 883 729				<b>Finish:</b>	
	Drwn: UF   Chk: -   Date: Jan 2010   Scale: 1:2@A4				<b>Die/Part:</b>	
	Sheet 6 of 22   Revision: G				<b>Dwg No:</b> VS 2P16 SF T	


M:\Documentation\Website Downloads\3. Timber Frames\1. Vertical\2. Servery\VS 2P16 SF T (G) - 2 pane servery 16mm double glazed INTERLOCKING sashless vertical slider in timber frames (bottom pane fixed) SF.dwg



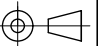
IF IN DOUBT ASK - DO NOT SCALE DRAWING



Rev	Description	Approved By	Date
G	16mm flapseal option updated to QEZ48	DF	03/2/2026
F	Delete P008 and replace with P229 - VS Sill	DF	27/8/2025
E	VS 300Pa/800Pa sill adaptor changed to VS Sill/VS HP Sill	DF	Oct2024
D	Add various sill options	SE	Jun2024
C	New lock, sill, pulley location, box sections, layout	RL	Jun2013
B	Adjusted glass sizes	UF	Nov2010
A	Original Issue	UF	Jan2010

Proprietary and confidential  The information contained in this drawing is the sole property of Aneeta Australia. Any reproduction in part or as a whole, without the written permission of Aneeta Australia is prohibited.	<b>Title:</b> 2 pane servery 16mm double glazed INTERLOCKING sashless vertical slider in timber frames (bottom pane fixed) SF with medium box and 16mm flapseal at sill vertical section A-A				<b>Material:</b> in Timber Frame	
	 949 Stud Road, Rowville VIC 3178, ABN 80 062 883 729				<b>Finish:</b>	
	Drwn: UF   Chk: -   Date: Jan 2010   Scale: 1:2@A4   Sheet 7 of 22   Revision: G				<b>Die/Part:</b>	
					<b>Dwg No:</b> VS 2P16 SF T	

M:\Documentation\Website Downloads\3. Timber Frames\1. Vertical\2. Servery\VS 2P16 SF T (G) - 2 pane servery 16mm double glazed INTERLOCKING sashless vertical slider in timber frames (bottom pane fixed) SF.dwg



IF IN DOUBT ASK - DO NOT SCALE DRAWING

glass width = opening - 110mm

aneeta opening size

flyscreen (optional by others)

16mm combination tee

top pane

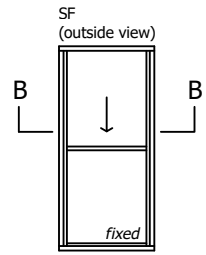
bottom pane

aluminium cover

lock

80 x 35mm box containing lead weight  
to counter balance moving pane of glass

jamb (by others)



outside

80

inside

Rev	Description	Approved By	Date
G	16mm flapseal option updated to QEZ48	DF	03/2/2026
F	Delete P008 and replace with P229 - VS Sill	DF	27/8/2025
E	VS 300Pa/800Pa sill adaptor changed to VS Sill/VS HP Sill	DF	Oct2024
D	Add various sill options	SE	Jun2024
C	New lock, sill, pulley location, box sections, layout	RL	Jun2013
B	Adjusted glass sizes	UF	Nov2010
A	Original Issue	UF	Jan2010

Proprietary and confidential

The information contained in this drawing is the sole property of Aneeta Australia. Any reproduction in part or as a whole, without the written permission of Aneeta Australia is prohibited.

Title:  
2 pane servery 16mm double glazed INTERLOCKING sashless vertical slider in timber frames (bottom pane fixed) SF with medium box horizontal section B-B



949 Stud Road, Rowville VIC 3178, ABN 80 062 883 729

Drwn: UF Chk: - Date: Jan 2010 Scale: 1:1@A4

Sheet 8 of 22

Revision: G

Material: in Timber Frame

Finish:

Die/Part:

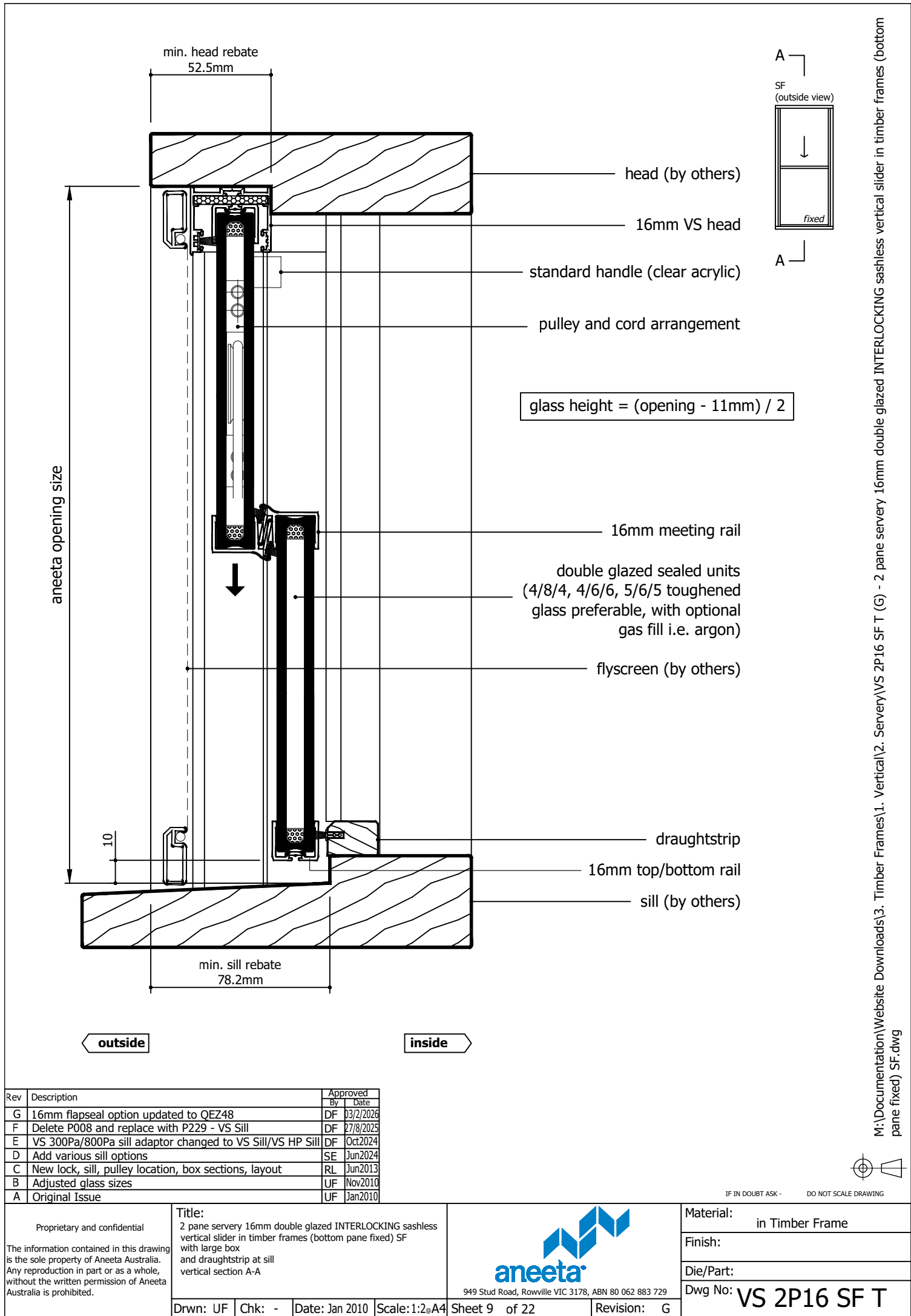
Dwg No: VS 2P16 SF T

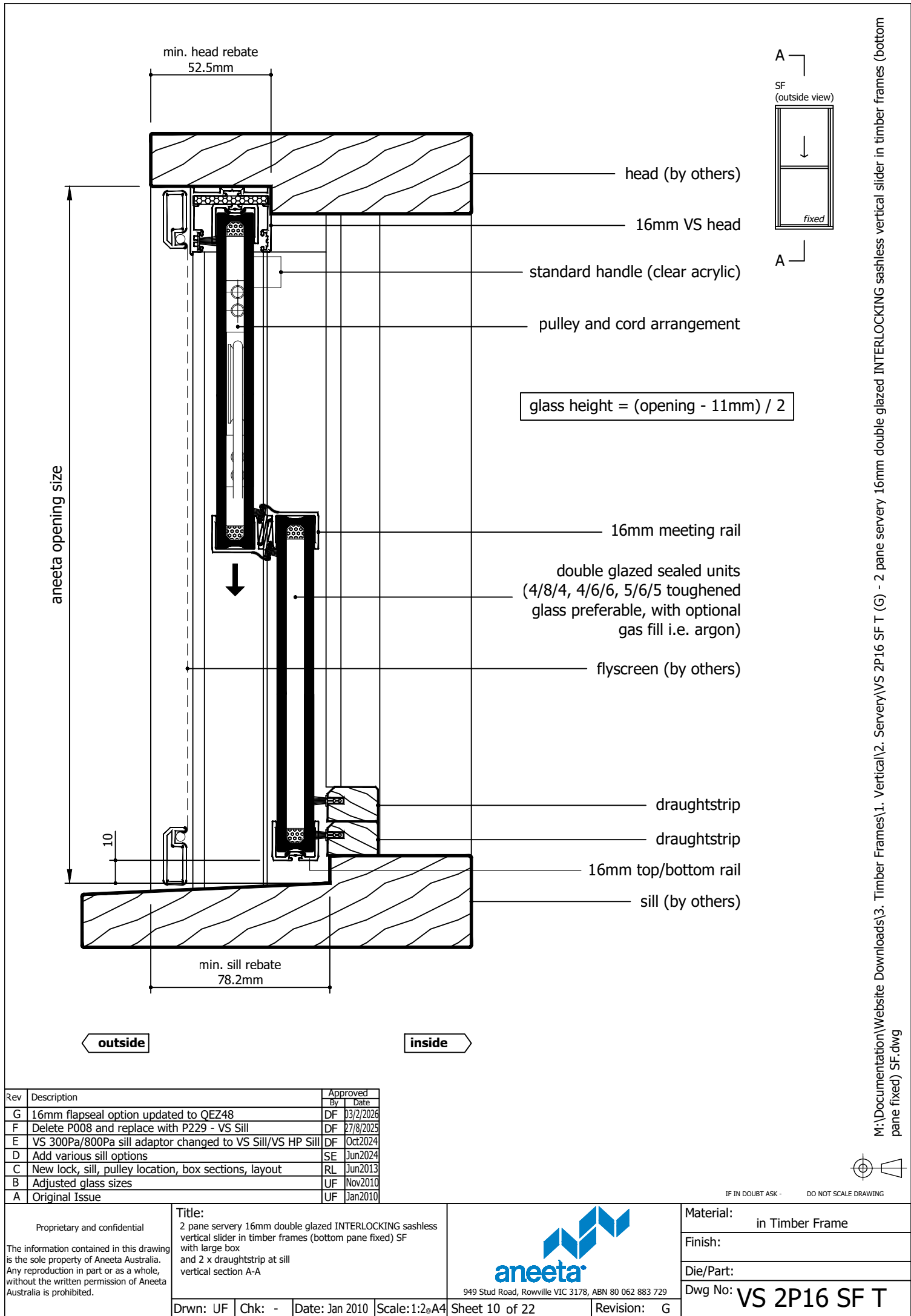
M:\Documentation\Website Downloads\3. Timber Frames\1. Vertical\2. Servery\VS 2P16 SF T (G) - 2 pane servery 16mm double glazed INTERLOCKING sashless vertical slider in timber frames (bottom pane fixed) SF.dwg

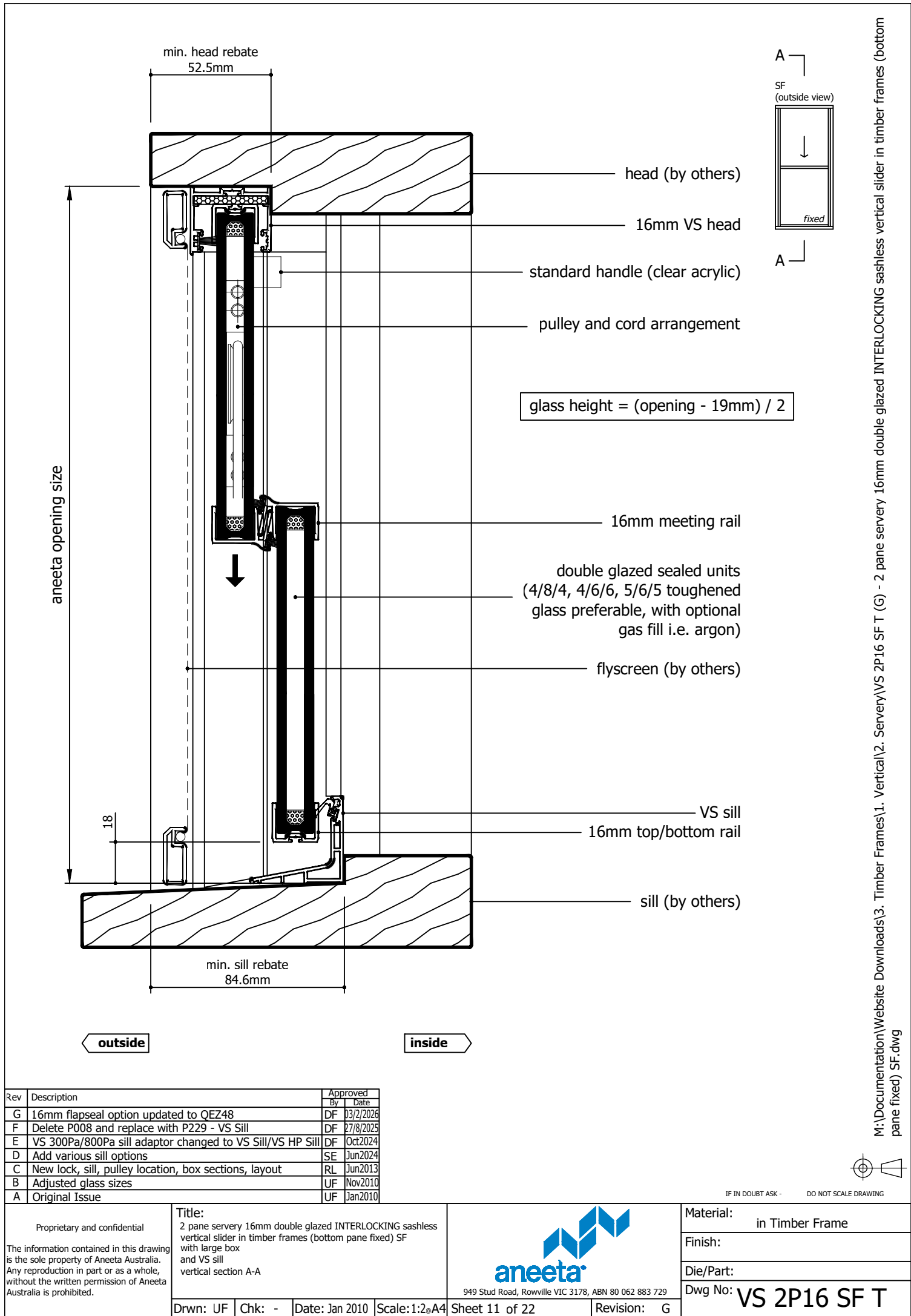


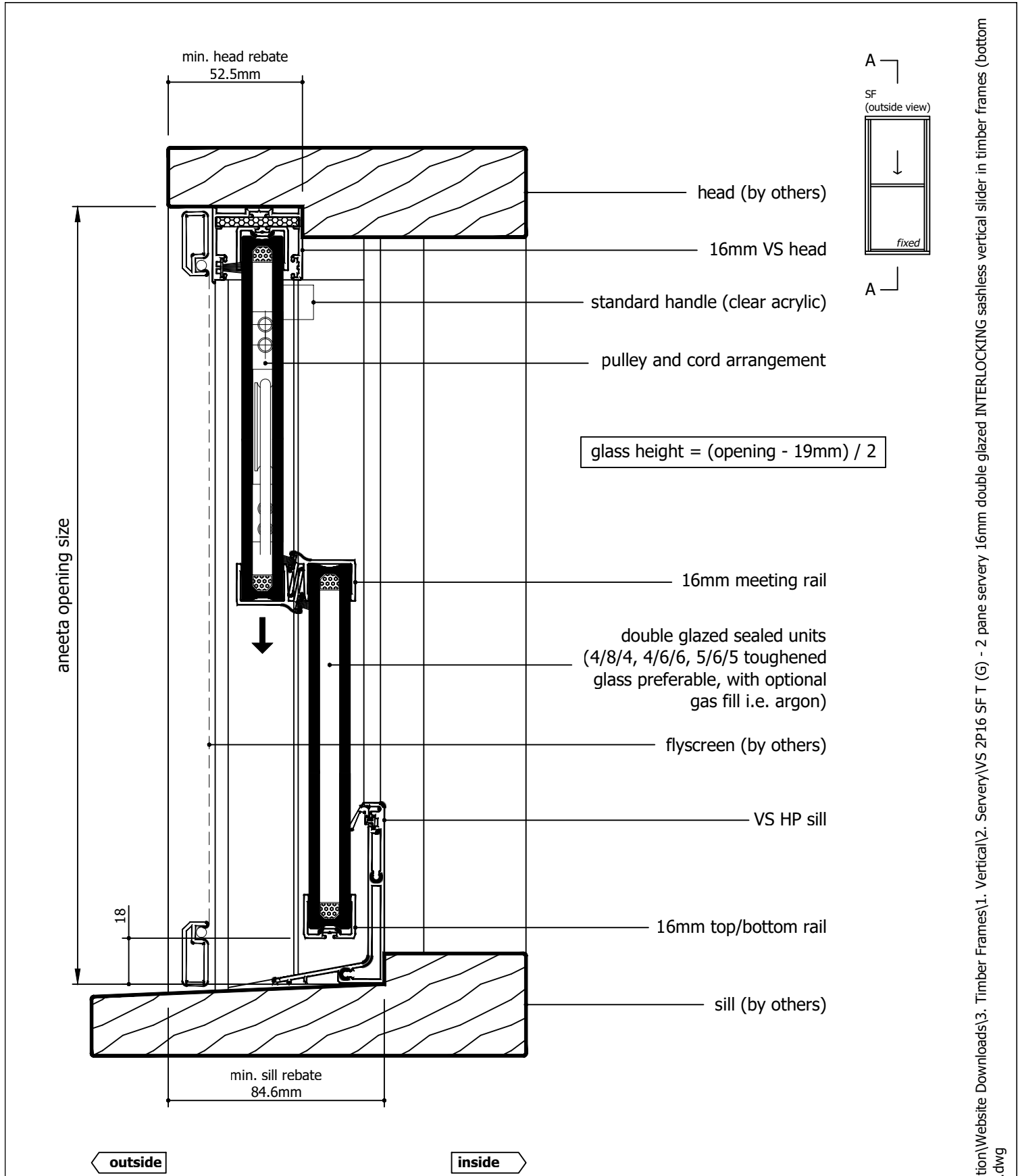
IF IN DOUBT ASK - DO NOT SCALE DRAWING








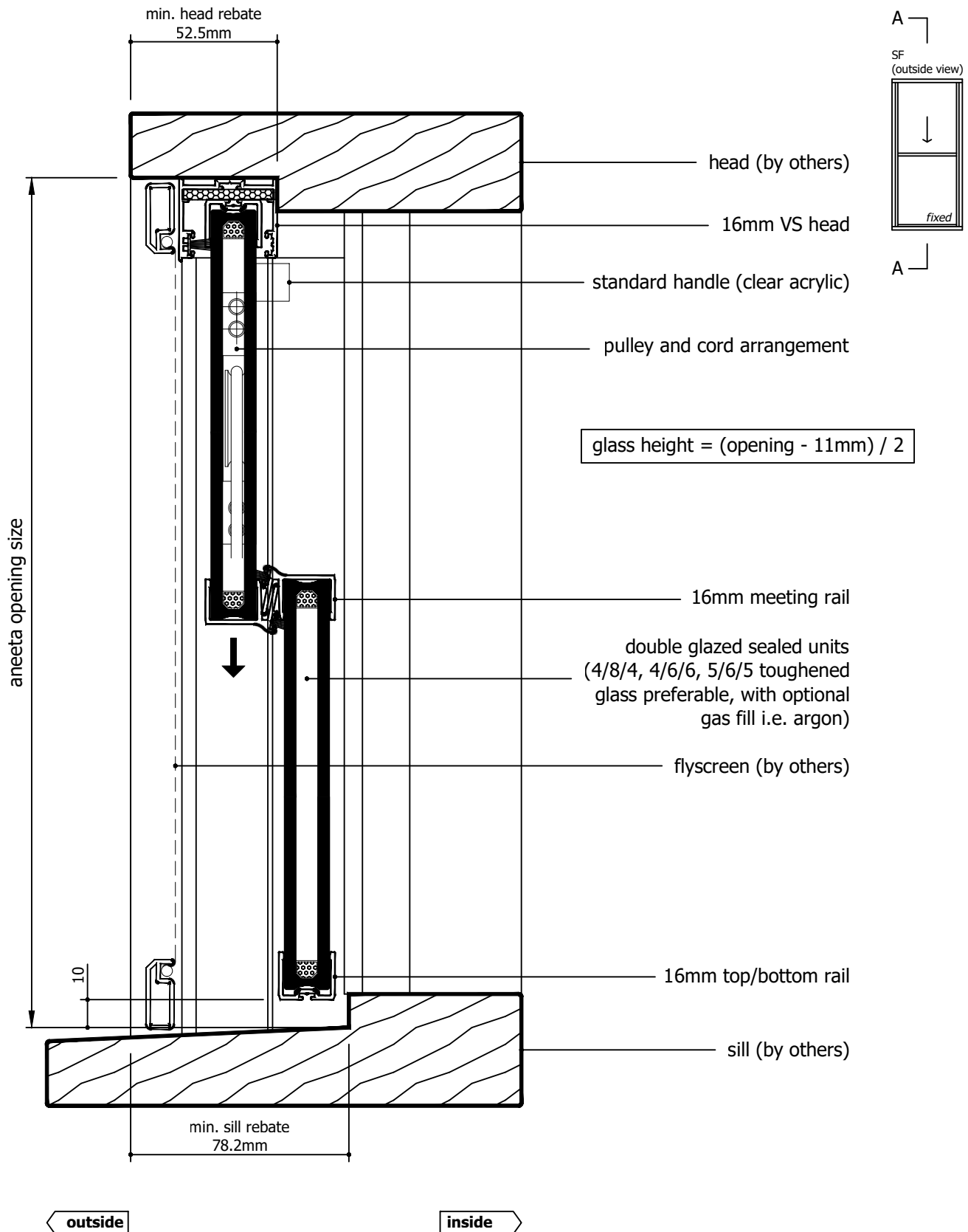




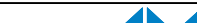
Rev	Description	Approved By	Date
G	16mm flapseal option updated to QEZ48	DF	03/2/2026
F	Delete P008 and replace with P229 - VS Sill	DF	27/8/2025
E	VS 300Pa/800Pa sill adaptor changed to VS Sill/VS HP Sill	DF	Oct2024
D	Add various sill options	SE	Jun2024
C	New lock, sill, pulley location, box sections, layout	RL	Jun2013
B	Adjusted glass sizes	UF	Nov2010
A	Original Issue	UF	Jan2010

<p>Proprietary and confidential</p> <p>The information contained in this drawing is the sole property of Aneeta Australia. Any reproduction in part or as a whole, without the written permission of Aneeta Australia is prohibited.</p>	Title: 2 pane servery 16mm double glazed INTERLOCKING sashless vertical slider in timber frames (bottom pane fixed) SF with large box and VS HP sill vertical section A-A				 949 Stud Road, Rowville VIC 3178, ABN 80 062 883 729	Material: in Timber Frame		
						Finish:		
						Die/Part:		
						Dwg No: VS 2P16 SF T		
Drwn: UF		Chk: -	Date: Jan 2010	Scale: 1:20 A4	Sheet 12 of 22	Revision: G		

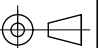
M:\Documentation\Website Downloads\3. Timber Frames\1. Vertical\2. Servery\VS 2P16 SF T (G) - 2 pane servery 16mm double glazed INTERLOCKING sashless vertical slider in timber frames (bottom pane fixed) SF.dwg



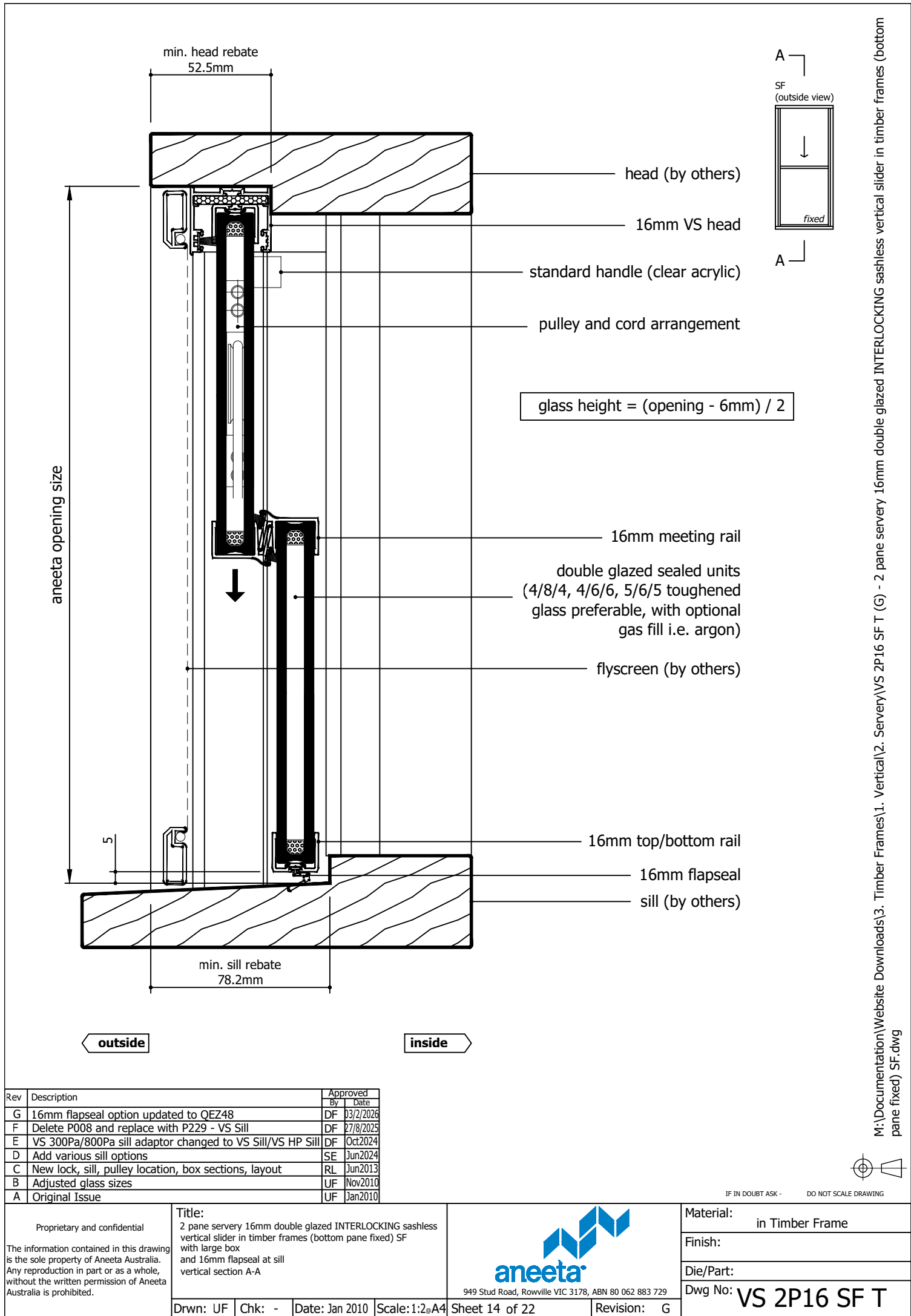
Rev	Description	Approved By	Date
G	16mm flapseal option updated to QEZ48	DF	03/2/2026
F	Delete P008 and replace with P229 - VS Sill	DF	27/8/2025
E	VS 300Pa/800Pa sill adaptor changed to VS Sill/VS HP Sill	DF	Oct2024
D	Add various sill options	SE	Jun2024
C	New lock, sill, pulley location, box sections, layout	RL	Jun2013
B	Adjusted glass sizes	UF	Nov2010
A	Original Issue	UF	Jan2010

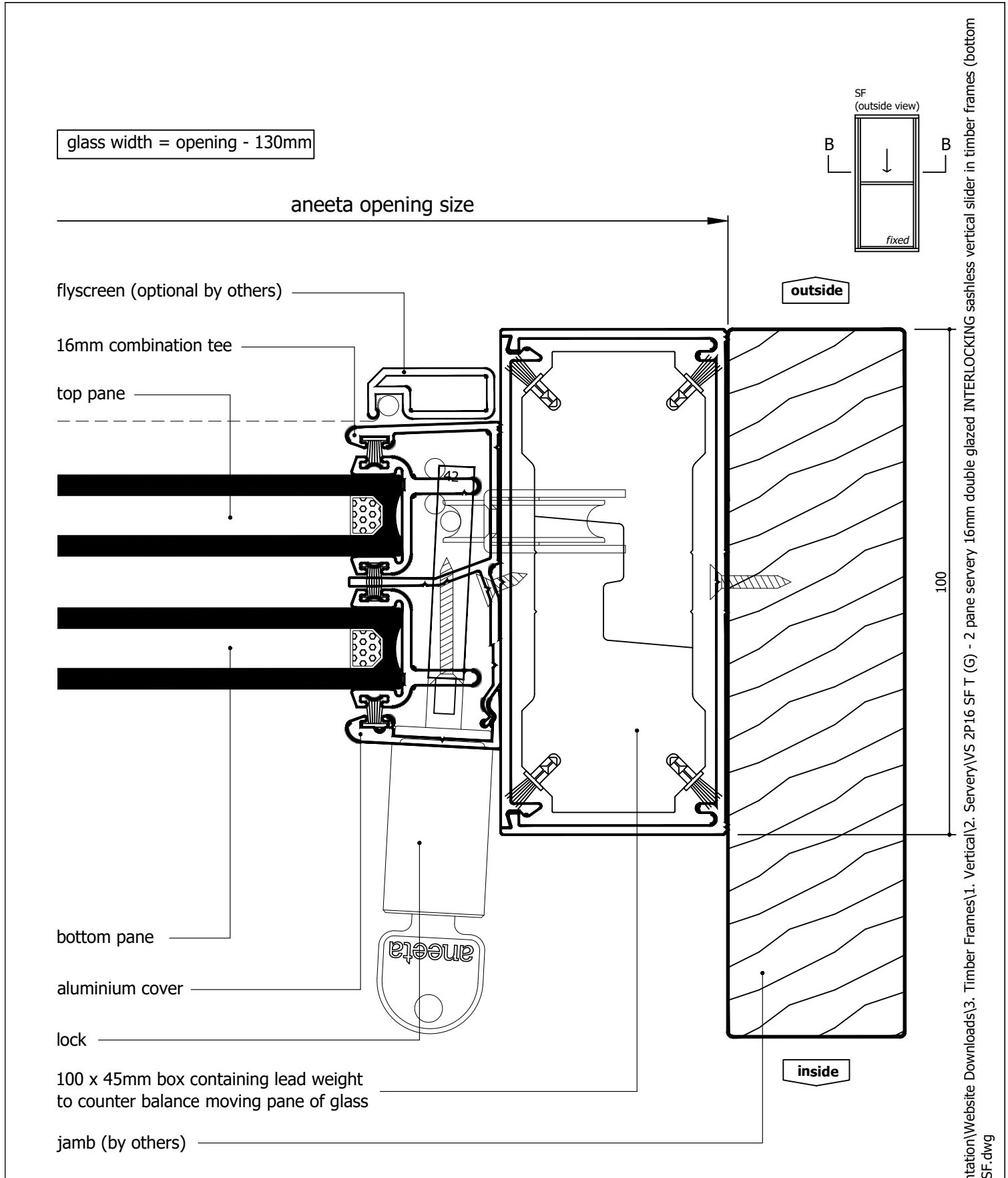
<div>Proprietary and confidential</div> <div>The information contained in this drawing is the sole property of Aneeta Australia. Any reproduction in part or as a whole, without the written permission of Aneeta Australia is prohibited.</div>	<div>Title:</div> <div>2 pane servery 16mm double glazed INTERLOCKING sashless vertical slider in timber frames (bottom pane fixed) SF with large box and no sill adaptor vertical section A-A</div>				<div> 949 Stud Road, Rowville VIC 3178, ABN 80 062 883 729</div>	<div>Material:</div> <div>in Timber Frame</div>	
						<div>Finish:</div>	
						<div>Die/Part:</div>	
						<div>Dwg No:</div> <div>VS 2P16 SF T</div>	
Drwn: UF	Chk: -	Date: Jan 2010	Scale: 1:2@A4	Sheet 13 of 22	Revision: G		

M:\Documentation\Website Downloads\3. Timber Frames\1. Vertical\2. Servery\VS 2P16 SF T (G) - 2 pane servery 16mm double glazed INTERLOCKING sashless vertical slider in timber frames (bottom pane fixed) SF.dwg




IF IN DOUBT ASK - DO NOT SCALE DRAWING

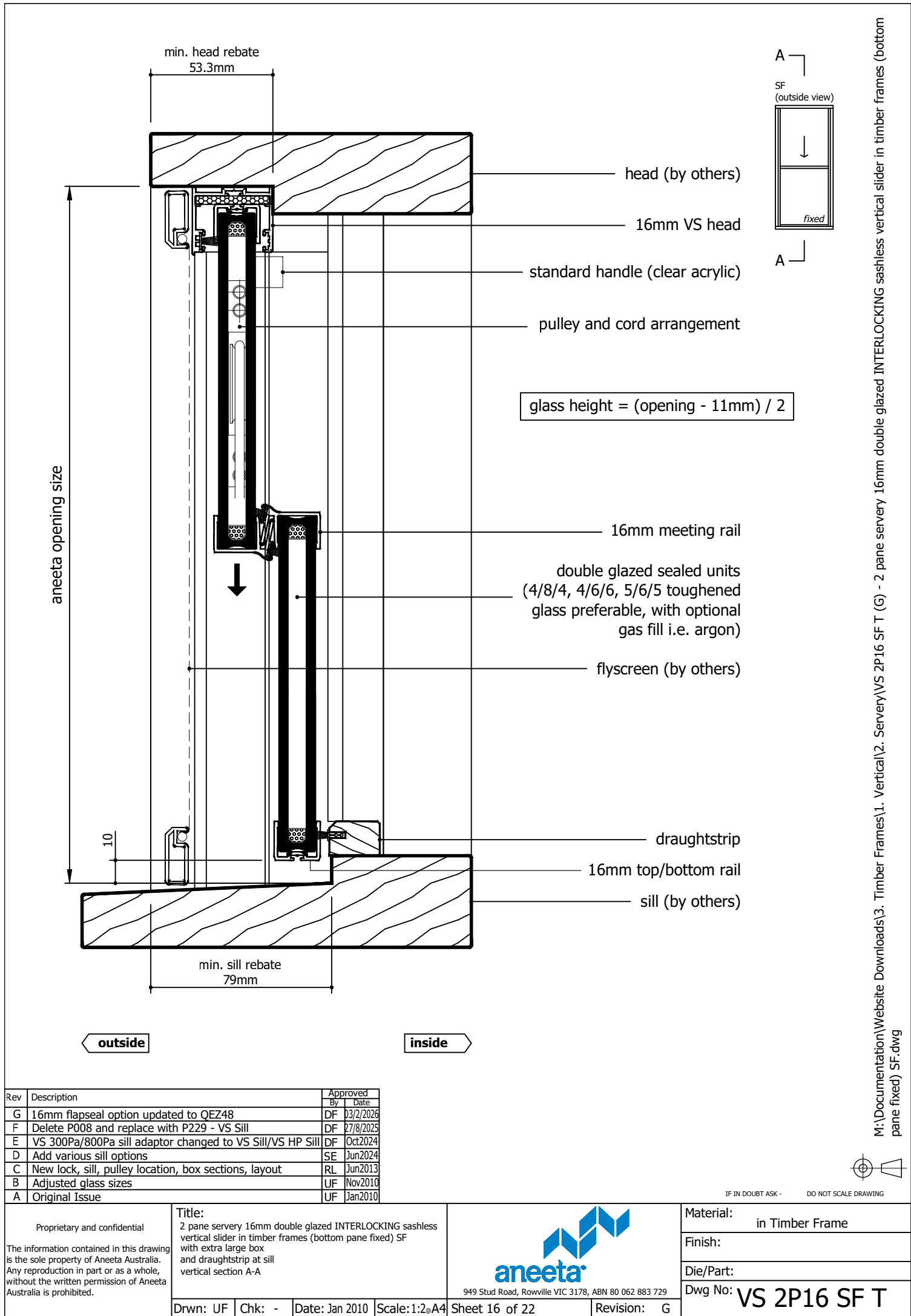




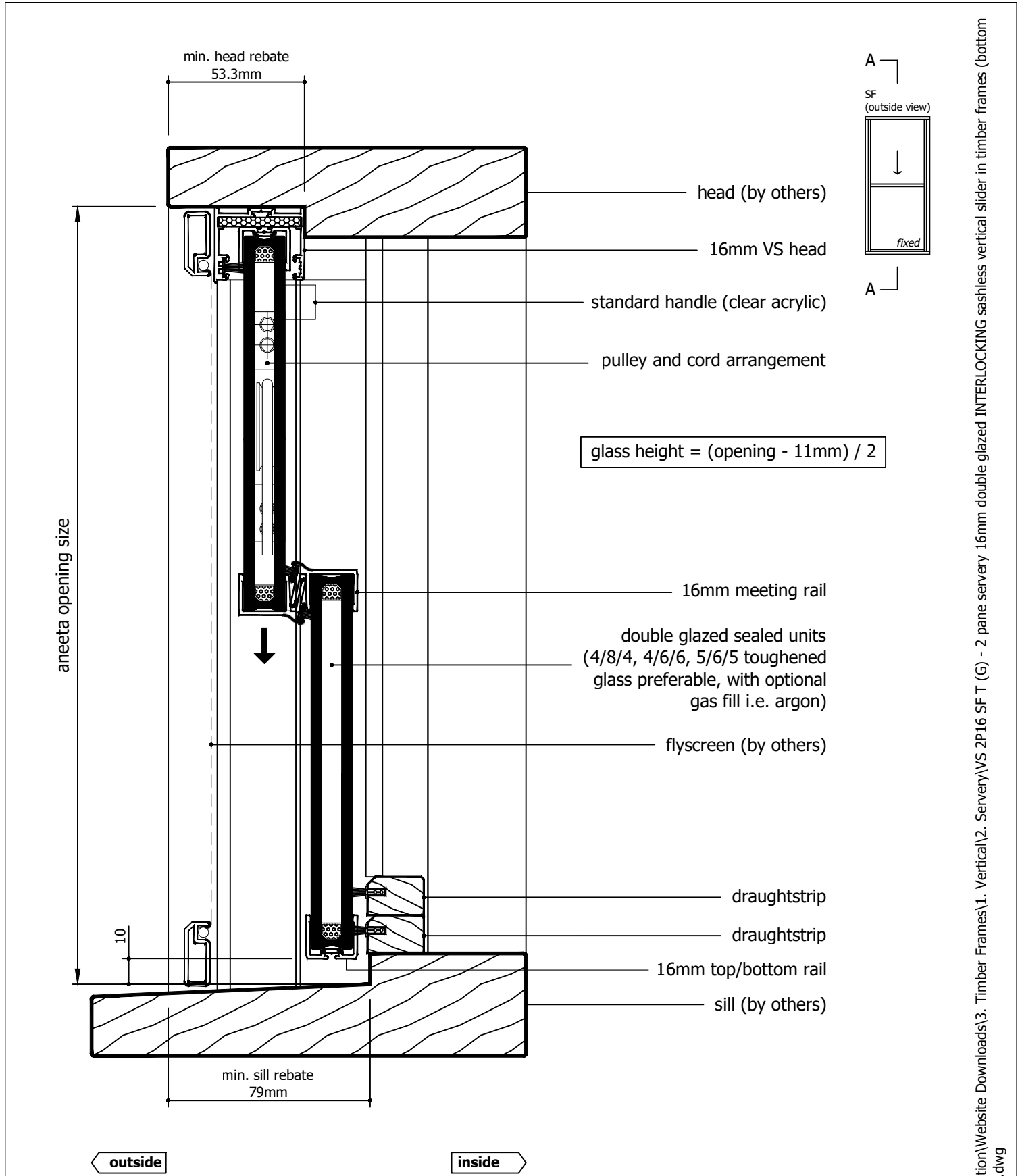
Rev	Description	Approved	
		By	Date
G	16mm flapseal option updated to QEZ48	DF	03/2/2026
F	Delete P008 and replace with P229 - VS Sill	DF	27/8/2025
E	VS 300Pa/800Pa sill adaptor changed to VS Sill/VS HP Sill	DF	Oct2024
D	Add various sill options	SE	Jun2024
C	New lock, sill, pulley location, box sections, layout	RL	Jun2013
B	Adjusted glass sizes	UF	Nov2010
A	Original Issue	UF	Jan2010

Proprietary and confidential  The information contained in this drawing is the sole property of Aneeta Australia. Any reproduction in part or as a whole, without the written permission of Aneeta Australia is prohibited.	Title: 2 pane servery 16mm double glazed INTERLOCKING sashless vertical slider in timber frames (bottom pane fixed) SF with large box horizontal section B-B		 949 Stud Road, Rowville VIC 3178, ABN 80 062 883 729		Material: in Timber Frame	
	Drwn: UF	Chk: -	Date: Jan 2010	Scale: 1:1@A4	Sheet 15 of 22	Revision: G
					Finish:	
					Die/Part:	
					Dwg No: VS 2P16 SF T	


M:\Documentation\Website Downloads\3. Timber Frames\1. Vertical\2. Servery\VS 2P16 SF T (G) - 2 pane servery 16mm double glazed INTERLOCKING sashless vertical slider in timber frames (bottom pane fixed) SF.dwg



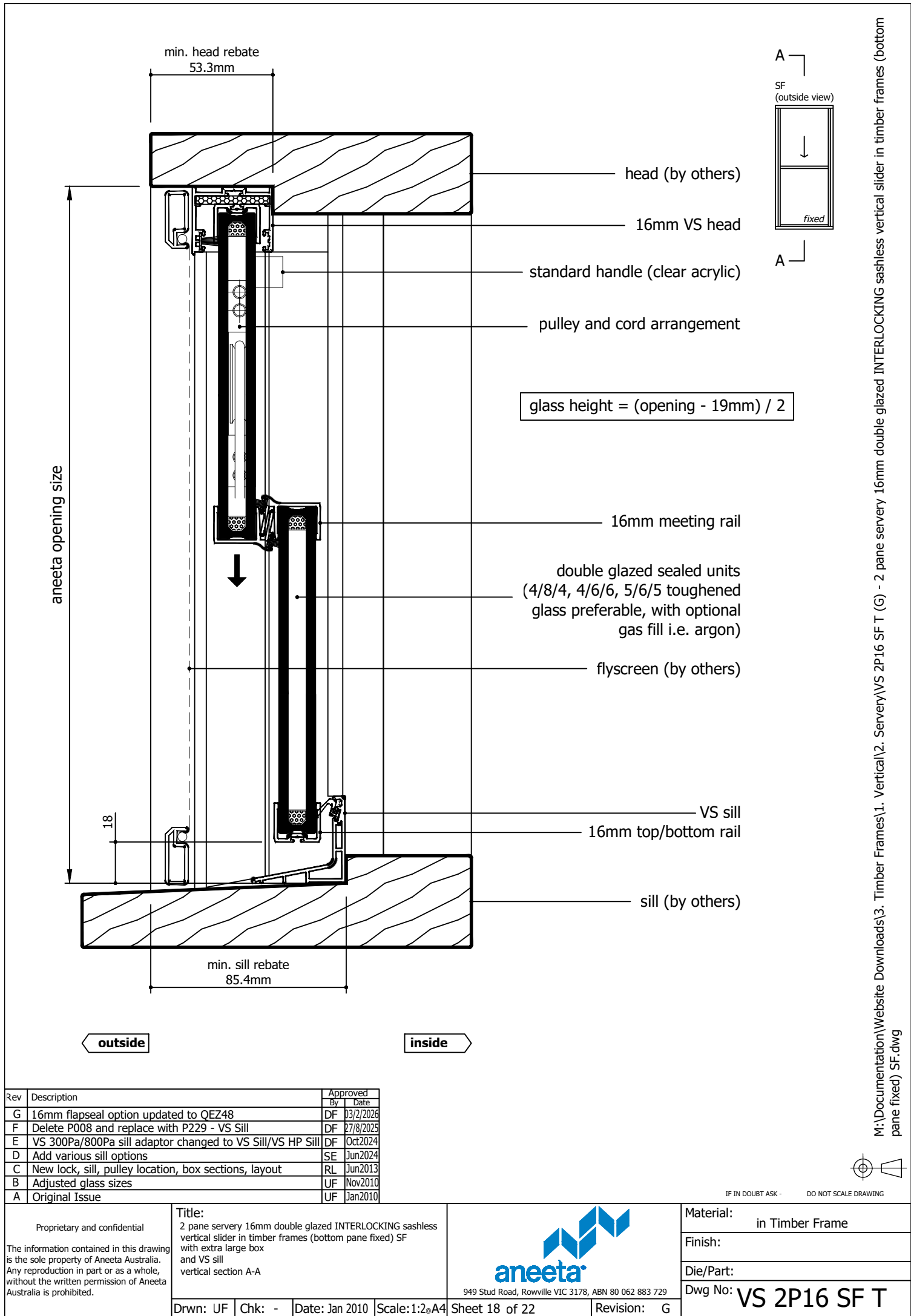


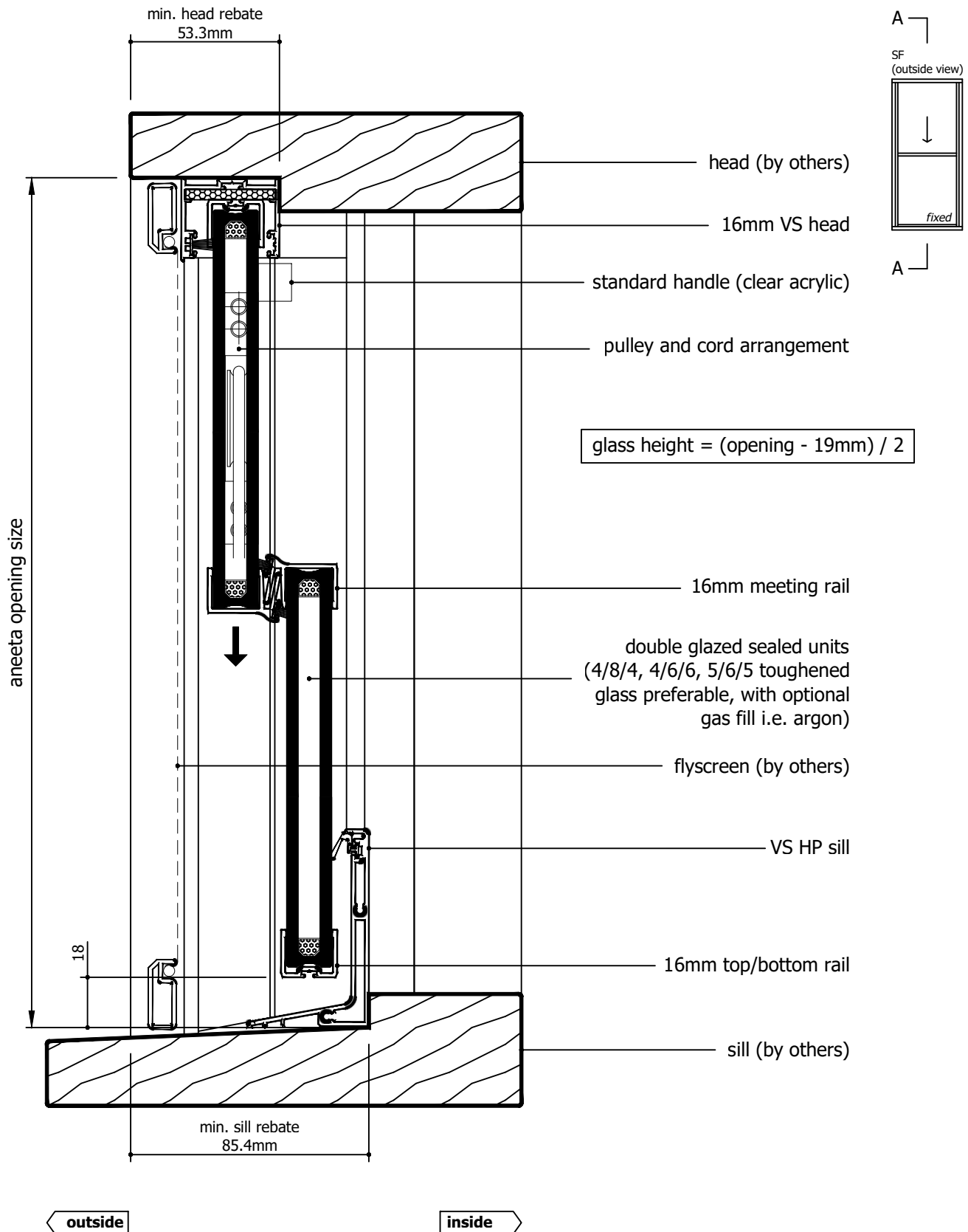


Rev	Description	Approved By	Date
G	16mm flapseal option updated to QEZ48	DF	03/2/2026
F	Delete P008 and replace with P229 - VS Sill	DF	27/8/2025
E	VS 300Pa/800Pa sill adaptor changed to VS Sill/VS HP Sill	DF	Oct2024
D	Add various sill options	SE	Jun2024
C	New lock, sill, pulley location, box sections, layout	RL	Jun2013
B	Adjusted glass sizes	UF	Nov2010
A	Original Issue	UF	Jan2010


<p>Proprietary and confidential</p> <p>The information contained in this drawing is the sole property of Aneeta Australia. Any reproduction in part or as a whole, without the written permission of Aneeta Australia is prohibited.</p>	Title: 2 pane servery 16mm double glazed INTERLOCKING sashless vertical slider in timber frames (bottom pane fixed) SF with extra large box and 2 x draughtstrip at sill vertical section A-A				 949 Stud Road, Rowville VIC 3178, ABN 80 062 883 729	Material: in Timber Frame
						Finish:
						Die/Part:
						Dwg No: VS 2P16 SF T
	Drwn: UF	Chk: -	Date: Jan 2010	Scale: 1:2@A4		Sheet 17 of 22

M:\Documentation\Website Downloads\3. Timber Frames\1. Vertical\2. Servery\VS 2P16 SF T (G) - 2 pane servery 16mm double glazed INTERLOCKING sashless vertical slider in timber frames (bottom pane fixed) SF.dwg

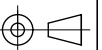




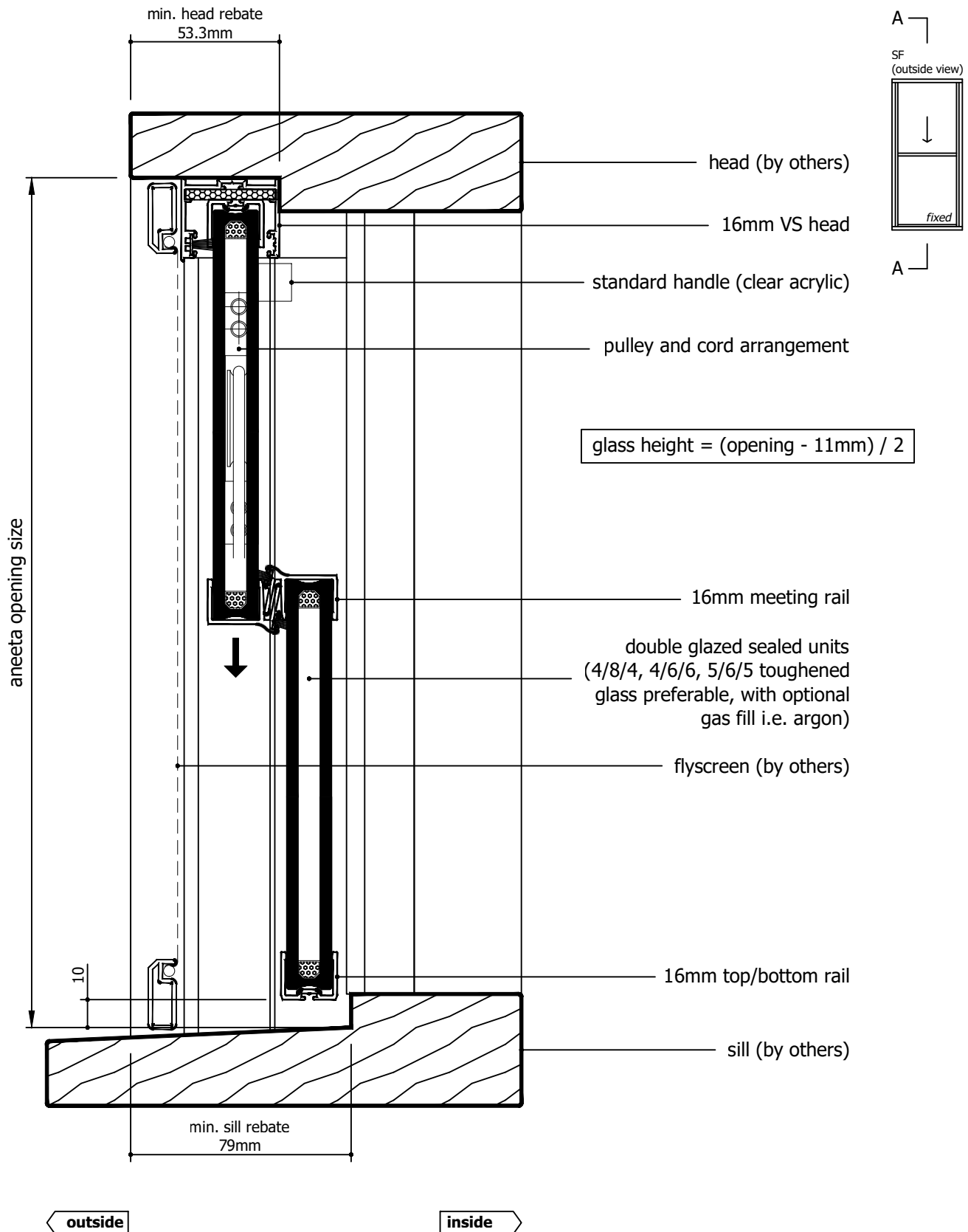
Rev	Description	Approved By	Date
G	16mm flapseal option updated to QEZ48	DF	03/2/2026
F	Delete P008 and replace with P229 - VS Sill	DF	27/8/2025
E	VS 300Pa/800Pa sill adaptor changed to VS Sill/VS HP Sill	DF	Oct2024
D	Add various sill options	SE	Jun2024
C	New lock, sill, pulley location, box sections, layout	RL	Jun2013
B	Adjusted glass sizes	UF	Nov2010
A	Original Issue	UF	Jan2010

Proprietary and confidential  The information contained in this drawing is the sole property of Aneeta Australia. Any reproduction in part or as a whole, without the written permission of Aneeta Australia is prohibited.	<b>Title:</b> 2 pane servery 16mm double glazed INTERLOCKING sashless vertical slider in timber frames (bottom pane fixed) SF with extra large box and VS HP sill vertical section A-A				<b>Material:</b> in Timber Frame	
	 949 Stud Road, Rowville VIC 3178, ABN 80 062 883 729				<b>Finish:</b>	
	Drwn: UF   Chk: -   Date: Jan 2010   Scale: 1:20 A4				<b>Die/Part:</b>	
	Sheet 19 of 22   Revision: G				<b>Dwg No:</b> VS 2P16 SF T	

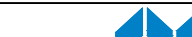
M:\Documentation\Website Downloads\3. Timber Frames\1. Vertical\2. Servery\VS 2P16 SF T (G) - 2 pane servery 16mm double glazed INTERLOCKING sashless vertical slider in timber frames (bottom pane fixed) SF.dwg



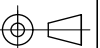
IF IN DOUBT ASK - DO NOT SCALE DRAWING



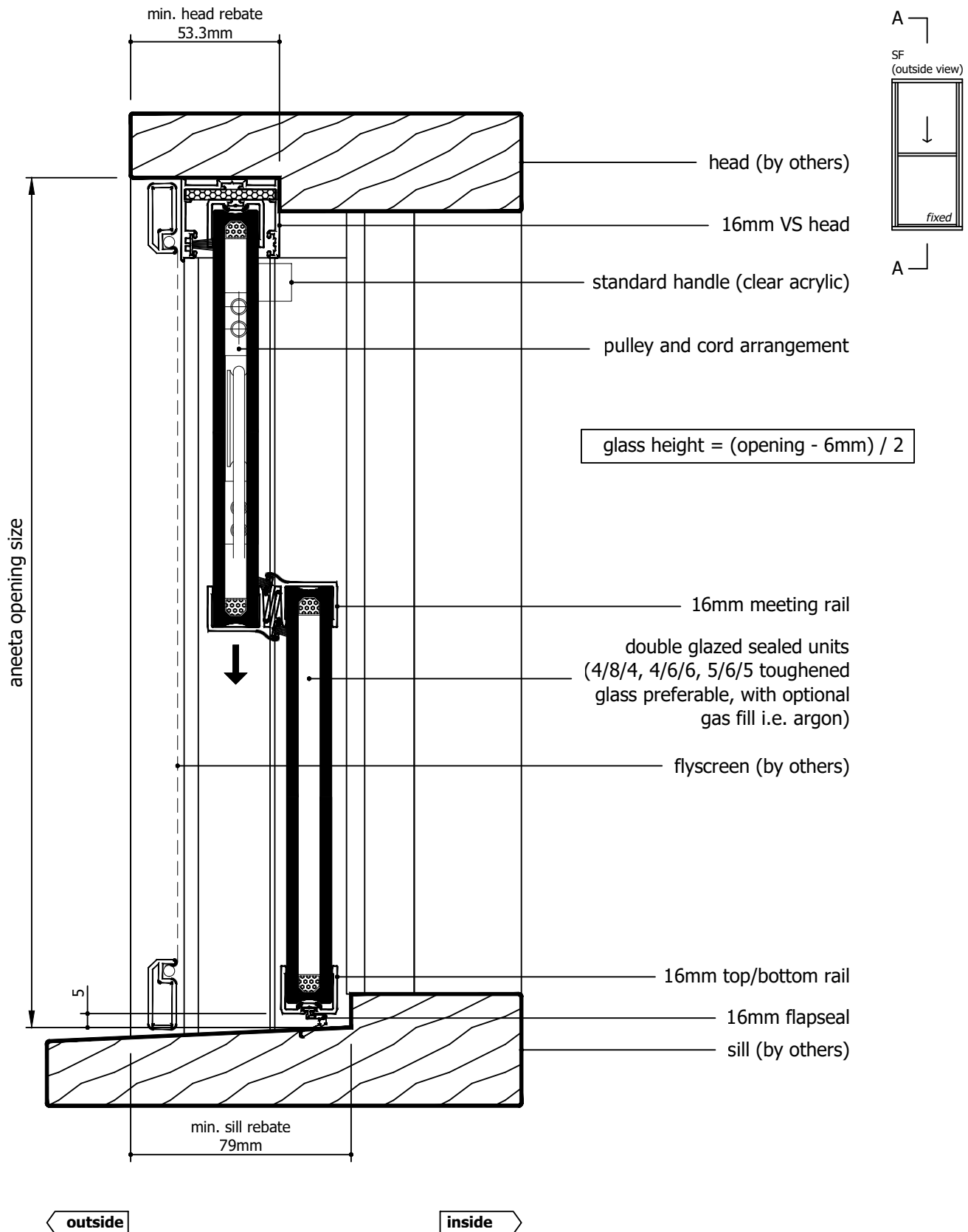
Rev	Description	Approved By	Date
G	16mm flapseal option updated to QEZ48	DF	03/2/2026
F	Delete P008 and replace with P229 - VS Sill	DF	27/8/2025
E	VS 300Pa/800Pa sill adaptor changed to VS Sill/VS HP Sill	DF	Oct2024
D	Add various sill options	SE	Jun2024
C	New lock, sill, pulley location, box sections, layout	RL	Jun2013
B	Adjusted glass sizes	UF	Nov2010
A	Original Issue	UF	Jan2010

<p>Proprietary and confidential</p> <p>The information contained in this drawing is the sole property of Aneeta Australia. Any reproduction in part or as a whole, without the written permission of Aneeta Australia is prohibited.</p>	<b>Title:</b> 2 pane servery 16mm double glazed INTERLOCKING sashless vertical slider in timber frames (bottom pane fixed) SF with extra large box and no sill adaptor vertical section A-A				 949 Stud Road, Rowville VIC 3178, ABN 80 062 883 729	<b>Material:</b> in Timber Frame
						<b>Finish:</b>
						<b>Die/Part:</b>
						<b>Dwg No:</b> VS 2P16 SF T
Drwn: UF	Chk: -	Date: Jan 2010	Scale: 1:2@A4	Sheet 20 of 22	Revision: G	


M:\Documentation\Website Downloads\3. Timber Frames\1. Vertical\2. Servery\VS 2P16 SF T (G) - 2 pane servery 16mm double glazed INTERLOCKING sashless vertical slider in timber frames (bottom pane fixed) SF.dwg



IF IN DOUBT ASK - DO NOT SCALE DRAWING



Rev	Description	Approved By	Date
G	16mm flapseal option updated to QEZ48	DF	03/2/2026
F	Delete P008 and replace with P229 - VS Sill	DF	27/8/2025
E	VS 300Pa/800Pa sill adaptor changed to VS Sill/VS HP Sill	DF	Oct2024
D	Add various sill options	SE	Jun2024
C	New lock, sill, pulley location, box sections, layout	RL	Jun2013
B	Adjusted glass sizes	UF	Nov2010
A	Original Issue	UF	Jan2010

Proprietary and confidential  The information contained in this drawing is the sole property of Aneeta Australia. Any reproduction in part or as a whole, without the written permission of Aneeta Australia is prohibited.	<b>Title:</b> 2 pane servery 16mm double glazed INTERLOCKING sashless vertical slider in timber frames (bottom pane fixed) SF with extra large box and 16mm flapseal at sill vertical section A-A				<b>Material:</b> in Timber Frame	
	 949 Stud Road, Rowville VIC 3178, ABN 80 062 883 729				<b>Finish:</b>	
	Drwn: UF   Chk: -   Date: Jan 2010   Scale: 1:2@A4				<b>Die/Part:</b>	
	Sheet 21 of 22   Revision: G				<b>Dwg No:</b> VS 2P16 SF T	

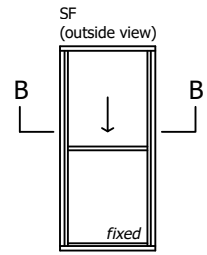
M:\Documentation\Website Downloads\3. Timber Frames\1. Vertical\2. Servery\VS 2P16 SF T (G) - 2 pane servery 16mm double glazed INTERLOCKING sashless vertical slider in timber frames (bottom pane fixed) SF.dwg



IF IN DOUBT ASK - DO NOT SCALE DRAWING

glass width = opening - 192mm

aneeta opening size



outside

inside

flyscreen (optional by others)

16mm combination tee

top pane

bottom pane

aluminium cover

lock

101.6 x 76.2mm box containing lead weight to counter balance moving pane of glass

jamb (by others)

101.6

Rev	Description	Approved By	Date
G	16mm flapseal option updated to QEZ48	DF	03/2/2026
F	Delete P008 and replace with P229 - VS Sill	DF	27/8/2025
E	VS 300Pa/800Pa sill adaptor changed to VS Sill/VS HP Sill	DF	Oct2024
D	Add various sill options	SE	Jun2024
C	New lock, sill, pulley location, box sections, layout	RL	Jun2013
B	Adjusted glass sizes	UF	Nov2010
A	Original Issue	UF	Jan2010

Proprietary and confidential

The information contained in this drawing is the sole property of Aneeta Australia. Any reproduction in part or as a whole, without the written permission of Aneeta Australia is prohibited.

Title:  
2 pane servery 16mm double glazed INTERLOCKING sashless vertical slider in timber frames (bottom pane fixed) SF with extra large box horizontal section B-B



949 Stud Road, Rowville VIC 3178, ABN 80 062 883 729

Drwn: UF Chk: - Date: Jan 2010 Scale: 1:1 A4

Sheet 22 of 22

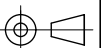
Revision: G

Material: in Timber Frame

Finish:

Die/Part:

Dwg No: VS 2P16 SF T



IF IN DOUBT ASK - DO NOT SCALE DRAWING

M:\Documentation\Website Downloads\3. Timber Frames\1. Vertical\2. Servery\VS 2P16 SF T (G) - 2 pane servery 16mm double glazed INTERLOCKING sashless vertical slider in timber frames (bottom pane fixed) SF.dwg